

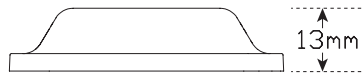
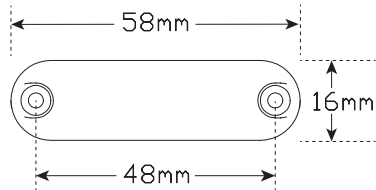
16 Series Marker Lamps

- Smallest Marker lamp
- Sleek Streamlined Design
- Easy Fit Screw Mount
- IP67 100% Waterproof
- Voltage Range 12 or 24 Volt

Function	Marker Lamps
Size	58mm x 16mm x 12.6mm
Voltage	12 or 24 Volt
LED Qty	3
Cable	20cm
Lens	PMMA/ Acrylic
Approval	ECE

Draw	Red	Amber	White	Green	Blue
@13.8V	0.04A	0.04A	0.05A	0.03A	0.03A
@28V	0.03A	0.03A	0.03A		

Approvals	Function	Approval No.
ECE	Rear End	E9*7R02/27*22158*00
ECE	Side Marker	E9*91R00/17*22080*00
ECE	Front End	E9*7R02/27*22156*00
CTA	Rear End	CTA-060173
CTA	Side Marker	CTA-060174
CTA	Rear End	CTA-060172



Part No. 16R12-2 - 12 Volt, Twin Blister
Part No. 16R24-2 - 24 Volt, Twin Blister



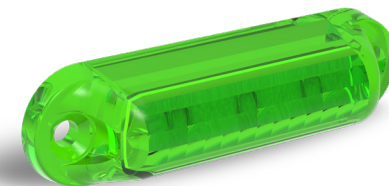
Part No. 16A12-2 - 12 Volt, Twin Blister
Part No. 16A24-2 - 24 Volt, Twin Blister



Part No. 16W12-2 - 12 Volt, Twin Blister
Part No. 16W24-2 - 24 Volt, Twin Blister



Part No. 16B12-2 - 12 Volt, Twin Blister
Non ECE Approved



Part No. 16G12-2 - 12 Volt, Twin Blister
Non ECE Approved

ECE
Approved
100%
Waterproof
5 Year
Warranty

Fitting Instructions

Mount marker lamp horizontally or vertically onto flat surface with screws provided. Please refer to ADR 13/00 for mounting instructions.



All enquiries P: (03) 9466 7075 E: led@ledtech.com.au, www.ledautolamps.com

All efforts are made to ensure all information is correct and up to date, it can be subject to change without notice. All measurements are in millimeters (mm) and are not to scale.

© All LED Technologies designs are registered throughout the world. - Current as of 30/11/2021